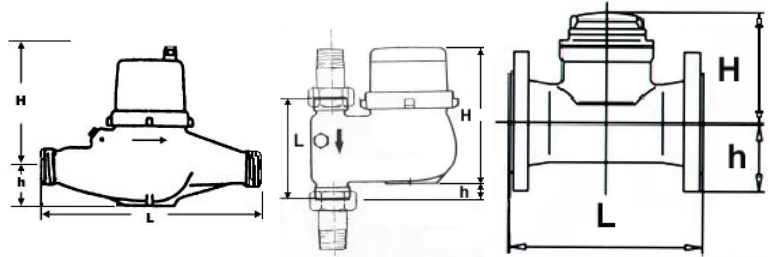


1800 Series Hot Water Meters

Sizes: 1/2" to 12"



Dimensions



General

1800 Series Water Meters are ideally suited to measure flow of hot water. The measurement assembly can be removed without removing the meter for easy maintenance. The vacuum sealed counter is non-resettable and comes standard with contact pulser.

Materials / Construction

Body:	1/2" to 1 1/2": Brass 2" – 12": Epoxy Coated Cast Iron
Connections:	1/2" to 1 1/2": Threaded 2" – 12" ANSI 150 Flanged
Turbine:	Fiberglass
Turbine Axle:	Chrome/Nickel/Steel
Bearing:	Stainless Steel/Sapphire
Counter:	Polycarbonate/Plastic

Operating Specifications / Tech Data

Max. Operating Temp:	248°F (120 °C)
Max. Operating Pres.:	232 PSI (16 bar)
Readout:	Odometer, US Gallons
Accuracy:	100% +/- 1.5%

Flow Range in GPM:

Size	Mod.	Flow	Type	Min.	Cont.	Max.
1/2"	1800	A	S. J.	0.13	6.6	13.2
3/4"	1805	A	S. J.	0.22	11.0	22.0
1"	1810	H	M.J.	0.4	26.3	52.6
1"	1811	D	M.J.	0.4	26.3	52.6
1 1/2"	1815	H	M.J.	0.7	43.9	87.2
1 1/2"	1816	D	M.J.	0.7	43.9	87.2
2"	1820	H	M.J.	0.88	65.8	131.6
2"	1825	A	W.T.	2.64	66.0	254.2
3"	1830	A	W.T.	14.1	140.9	396.3
4"	1835	A	W.T.	5.26	263.2	790.0
6"	1840	A	W.T.	26.32	657.9	1535

Type: S.J. = Single Jet, M.J. = Multi Jet, W.T. = Woltman Turbine

For Sales & Service Contact:

41 Magnolia Avenue
Cambridge MA 02138
Phone: (617) 290-2134
Fax: (240) 250-8907

Follin Flo-Controls
www.FollinFlo-Controls.com
sales@FollinFlo-Controls.com

Doc. Ref: 1900_water_bul_FFC_v1

5 Heritage Hill Rd.
Norwalk, CT 06851
Phone: (203) 845-0593
Fax: (203) 846-3825

Size	Mod.	Flow	L	H	h	Lbs.
1/2"	1800	A	4 1/2"	3 3/4"	3/4"	2.3
3/4"	1805	A	5	3 3/4"	3/4"	2.5
1"	1810	H	10 1/4"	5 1/2"	1 3/4"	6.4
1"	1811	D	5 1/8"	7 1/2"	1 1/8"	6.8
1 1/2"	1815	H	11 1/8"	6 1/4"	2"	11.3
1 1/2"	1816	D	7 1/8"	8 3/4"	1/8"	12.1
2"	1820	H	10 1/2"	7 1/8"	3 1/4"	27.5
2"	1825	A	7 1/8"	5 1/2"	3"	24.4
3"	1830	A	8 1/8"	5 1/2"	3 3/4"	27.5
4"	1835	A	9 1/8"	7 1/8"	4 3/8"	43.7
6"	1840	A	11 1/8"	8 1/2"	5 3/4"	71.6

Flow: A = Any, H = Horizontal, D = Down

Pulse Weights: Form A (2 wire), rated 0.2 amp at 24V

1 Gal	(1/2" – 1 1/2") 1800 - 1816
10 Gal	(2" – 4") 1820 - 1835
100 Gal	(6") 1840

Installation Considerations

Consult Installation instructions for exact requirements.

1" and 1 1/2" versions available for Horizontal Flow (H Version) and Downward Flow (D version) see above. All others can be installed in Any Flow direction (A)

Meters are designed to operate at a sustained flow of half the max flow rating. They should not be operated at max flow for more than 1 hr/day.

Shut-off valves are recommended before and after the meter to facilitate service.

Options & Accessories

- Remote Totalizers
- Cuft or Metric versions
- Flange Kits
- Additional Sizes up to 12"