

Actaris DELTA Type 2000 Rotary Meters

General: Delta Rotary meters are positive displacement type meters that use the classic “roots” lobed impeller principle of measurement. They are suitable for Custody Transfer/Fiscal Measurement or sub-metering. Two counter-rotating impellers spin inside the pressurized precision machined measuring chamber.



The rotation is transmitted via a magnetic couple to the mechanical index. An odometer style index totalizes the raw “uncorrected” volume. The uncorrected volume can be transmitted via an integrated LF or HF Pulser to a remote mounted PTZ corrector such as the Galvanic Gas Micro – which compensates for fluctuations in pressure, temperature and super-compressibility. The Gas Micro has built in logging capability which can be accessed with a laptop computer or via modem. Pulse output from the Gas Micro will also permit the Corrected Volume data to be re-transmitted to a remote mounted counter or Energy Management System

Characteristics & Performance Data:

Connect. Available: 1.5” NPT, ISO PN 10/16, ISO PN 20, ANSI 0125

Pressure Rating: 12 Bar (175 PSIG) for 2040 series, 16 bar (232 PSIG) for 2050-2100

Rangeability: 20 – 200 depending on model

Size (Metric)	Size (Imperial)	Type	Material	DN (mm)	Inlet	Start Flow (dm ³ /hr)	Max Flow (m ³ /hr)	Max Flow (ft ³ /hr)
G10 – G40	8C – 2M	2040/A	Alu	40	1.5”	30	16 - 65	560 - 2000
G16 – G65	8C – 3M	2050/A	Alu	50	2”	50	25 -100	800 - 3500
G100 – G160	5M – 9M	2080/A	Alu	50-80	2” or 3”	70	160 -250	5000 - 9000
G160.300	11M	2100/A	Alu	100	4”	280	300	11000
G250	16M	2100/A	Alu	100	4”	200	400	16000

Dimensions:

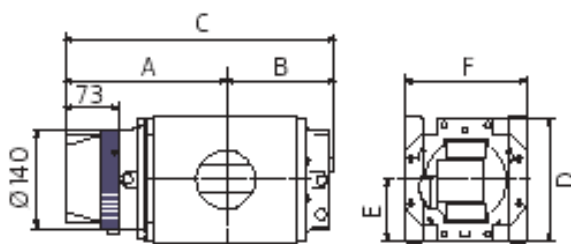
Metric (mm)	A	B	C	D	E	F	Kg
G10 - G16 (2040)	93	66	159	96	70	121	2.7
G25 - G40 (2040)	103	86	189	96	100	121	3.4
G16 -G65 (2050)	187	120	307	182	87	171	11
G100 (2050/2080)	224	158	382	182	87	171	15
G160	228	181	409	235	121	241	29
G160.300	263	216	479	235	121	241	34
G250	331	284	615	235	121	241	43

Imperial (in)	A	B	C	D	E	F	Lbs
8C – 1M (2040)	3.7	2.6	6.3	3.8	2.8	4.76	6.0
1.5M - 2M (2040)	4.1	3.4	7.4	3.8	3.9	4.76	7.5
8C-3M (2050)	7.4	4.7	12.1	7.2	3.4	6.73	24.3
5M (2050/2080)	8.8	6.2	15.0	7.2	3.4	6.73	33.1
9M (2080)	9.0	7.1	16.1	9.3	4.8	9.49	63.9
11M (2100)	10.4	8.5	18.9	9.3	4.8	9.49	75.0
16M (2100)	13.0	11.2	24.2	9.3	4.8	9.49	94.8

2050/A G16-G25-G40-G65-G100;

2080/A G100-G160; 2100/A G250

Material: Aluminium (profile or casted)



2040/A G10-G16-G25-G40
Material: Aluminium (profile)

