

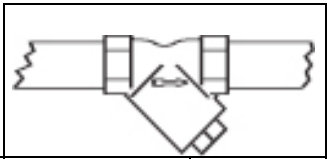
Low Flow Oil Meters

Installation & Operation

Installation

1. Filtration

Low Flow Oil Meters come with a safety strainer installed in the inlet. A dedicated filter should still be installed to ensure the required filtration level is maintained.



Mod.	Size	Safety Strainer (installed)	Required Filter mesh	In Microns μ
4	1/8"	120 mesh	200 mesh	80 μ
8	1/4"	100 mesh	140 mesh	100 μ
15	1/2"	40 mesh	60 mesh	250 μ ⁽¹⁾
20	3/4"	40 mesh	40 mesh	400 μ
25	1"	40 mesh	40 mesh	400 μ
40	1 1/2"	20 mesh	30 – 40 mesh	600 μ
50	2"	20 mesh	30 – 40 mesh	600 μ

Notes:

1. Model 15 must have a filter/dirt trap with a maximum of 100 micron (140 mesh) when measuring heavy oil
2. Model 15 – 50 require additional filtration when using high accuracy/matched pairs for differential measurement.

2. Direction of Flow and Meter Orientation

Observe the Flow Direction Arrow on the meter.

Low Flow Oil Meters can be installed in vertical or Horizontal Lines

The meter should always be installed at a low point in the line to ensure that air or gas does not enter the measuring chamber.

Only use the supplied fittings to connect the meter.

3. Start up

Slowly fill pipe system and carefully vent air in the line. Air trapped in the pipes causes errors in measurement and may damage the meter,

For Sales & Service Contact:

41 Magnolia Avenue
 Cambridge MA 02138
 Phone: (617) 290-2134
 Fax: (240) 250-8907

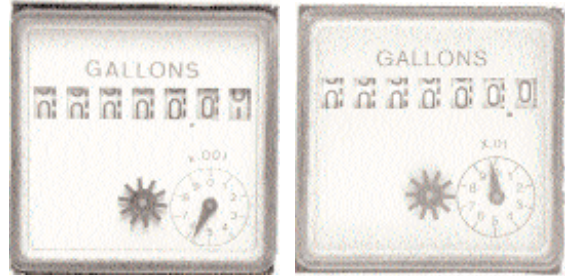
Follin Flo-Controls
www.FollinFlo-Controls.com
sales@FollinFlo-Controls.com

Doc. Ref: v. 1

5 Heritage Hill Rd.
 Norwalk, CT 06851
 Phone: (203) 845-0593
 Fax: (203) 846-3825

4. Reading meters in US Gallons

Model 4 & 8 Mechanical Index



Model 15, 20 & 25 Index



Model 40 & 50 Index



5. Typical Applications

