

GALLUS® 2000

DOMESTIC DIAPHRAGM GAS METER

- Compact size
- Broad metrological performances : G 1.6 - G2.5 - G 4
- Long-term accuracy and reliability
- EEC approval and more than 15 national approvals (DVGW, NMI Class 1, etc)
- Fire-resistant construction (DIN 3374)
- Version ready for remote reading
- Versions for budget metering and for safety and communication



Use

The Gallus 2000 are made to measure accurately the volumes of natural gas (and GPL) used for domestic appliances. Please consult us for any other gas.

Dialogaz® Smart Meter

Developped together with French utility Gaz de France, Dialogaz® is a Gallus 2000 that features an internal shutoff valve commanded by an electronic Printed Circuit Board with an LCD. Meter allows communication and safety functions such as display of estimative consumption costs, remote meter reading, gas shutoff in case of gas leak detection, etc. More than 80,000 units are operating today.

® Dialogaz : Gaz de France trade mark

Talexus®

Pay-as-you-go consumption is now available for gas, thanks to the microprocessor smart cards and Gallus 2000 Budget Gas Meters that constitute the Talexus® Gas Payment System (see specific leaflet). The rechargeable cards are dedicated to each customer and are credited and inserted in the meter to enable gas consumption. They constitute the link between the utility and the customer. Internal shutoff valve closes when there is no more credit left in the meter. More than 2 million Schlumberger electricity meters installed back our experience in payment systems that offer:

- no disconnections,
- enhanced consumption management,
- no billing,
- no meter reading.

Working principle

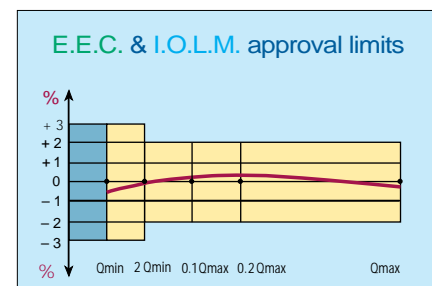
The Gallus 2000 uses the positive displacement diaphragm principle.

Its design consists of a twin chamber diaphragm measuring unit. The twin chambers are each fitted with a flexible and gastight diaphragm moved by the differential inlet and outlet pressure. A transmission system with a rotating monovalve and a valve system transfer the reciprocating motion, driving the mechanical index.

The whole measuring system is contained in a robust gastight casing. The construction and the operation design of this meter make the Gallus 2000 an extremely reliable and accurate product.

Metrology

The Gallus 2000 meters satisfy I.O.L.M. and E.E.C. specifications, and are stamped by the legal metrological authority according to these metrological standards. During the preliminary test controls on the sonic nozzle test benches, all meters are tested at Q_{min} , $0.2 Q_{max}$ and Q_{max} . Quality assurance procedures to ISO 9001 standard and quality controls at the various steps of manufacture ensure a very high quality level.

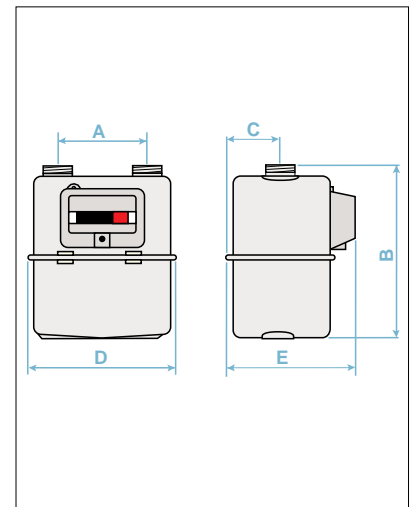


Technical characteristics

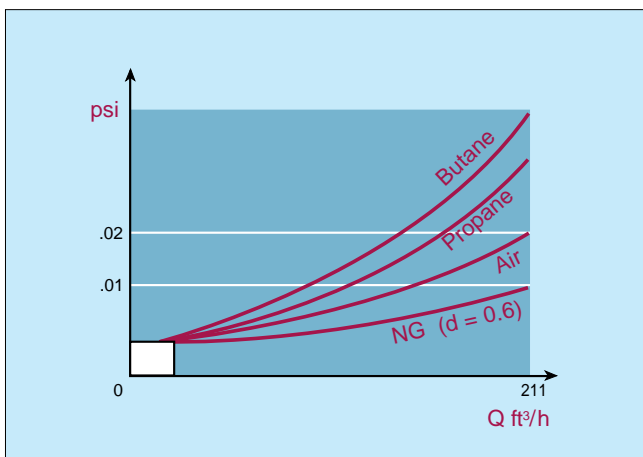
Use	Natural gas and LPG (please consult us for any other gas)		
Cyclic volume	0.42 ft ³		
Operating temperature	- 4 F to 104°F (please consult us for lower temperatures)		
Storage temperature	- 40°F to + 140°F		
Maximum operating pressure	7.25 PSI		
Measuring range	G 1.6	Qmin 0.57 ft ³ /h	Qmax 88 ft ³ /h
	G 2.5	Qmin 0.88 ft ³ /h	Qmax 141 ft ³ /h
	G 4	Qmin 1.40 ft ³ /h	Qmax 211 ft ³ /h
Operational pulse generator	Standard 1 ft ³ per pulse		
Pulse transmitter	Retrofittable LF-system, 12 Vdc max - 10 mA max, standard 1 ft ³ /pulse Wire fixation by jack plug or connecting block		

Dimensions

Meter case material	A in	B in	C in	D in	E in	Weight lbs	Connection threads
Steel	4.3	8.9	2.6	7.4	6.5	3.2	3/4" NPT



Pressure losses



Size	Natural Gas d = 0.6	Air	Propane	Butane
G 1.6	0.4 mbar	0.55 mbar	0.7 mbar	0.85 mbar
G 2.5	0.6 mbar	0.8 mbar	1.3 mbar	1.6 mbar
G 4	1 mbar	1.5 mbar	2.5 mbar	3.2 mbar

Optional features

- Serial number, utility logo and bar code customizing by laser marking
- Fire-proof versions according to DIN 3374 and to BS 4161 & 476
- Index in cubic feet
- Low frequency pulse generator
- Connection with pressure test nipple
- Large range of inlet and outlet connections (ISO, DIN, BSP, ASA... and any more)

Accessories

- Retrofittable pulse transmitter
- Meterbars for two-pipe meters
- Valves, pipe connections, installation cabinets
- Domestic governors and safety cut-off valves
- MAPS radio frequency and telephone meter reading system (see specific leaflet)

Ordering information :

- Measuring range (G 4, G 2.5, G 1.6)
- Case material and working pressure
- Connection spacing and size
- Pulse transmission (retrofit)
- Specific markings (serial number, logo, bar code)

All dimensions and specifications should be confirmed with the manufacturer, if necessary.

